

NOTES : (UNLESS OTHERWISE SPECIFIED)

MATERIAL

- 1 HOUSING : HIGH-TEMPERATURE THERMOPLASTIC, UL94V_0, SELECTIVE COLOR
- 2 CONTACTS : COPPER ALLOY, SQ=0.46mm, SELECTIVE ELECTRO-PLATING

SPECIFICATION

- 1 CURRENT RATING : 1 AMP
- 2 INSULATOR RESISTANCE : 500 MEGOHMS MIN.
- 3 DIELECTRIC WITHSTANDING : AC 500V
- 4 CONTACT RESISTANCE : 20 MILLIOHMS MAX.
- 5 OPERATING TEMPERATURE : -40°C ~ +105°C
- 6 WAVE-SOLDERING PEAK TEMPEARTURE
- THERMOPLASTIC-PA6T : 260±5°C FOR 5-10 SEC(s)
- HIGH-TEMPERATURE P.B.T. : 250±5°C FOR 5 SEC(s)

PRODUCT ORDER OPTION

PHD ** - * * * P1X ** J6

POSITION NO. (2~40 MAX.)

PLATING

- A~Au 0.2~1μ OVERALL
- B~Au 3μ OVERALL
- E~Au 15μ OVERALL
- J~Sn 80~100μ OVERALL
-

HOUSING COLOR

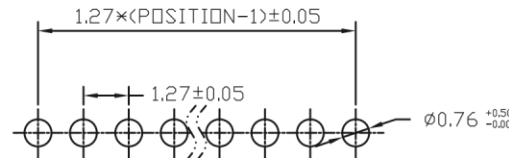
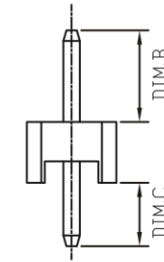
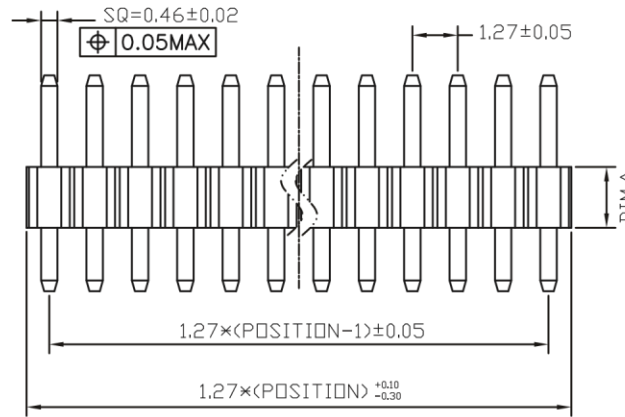
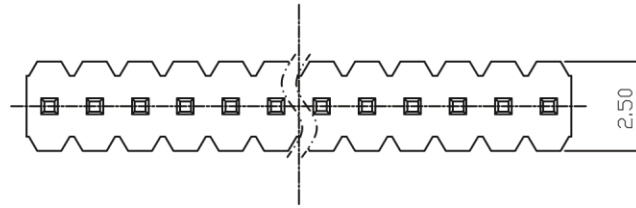
- 1~BLACK 2~BEIGE
- 3~WHITE
-

HOUSING MATERIAL

- 3~THERMOPLASTIC-PA6T
- 6~HIGH-TEMPERATURE P.B.T.
-

DIMENSION CODE (RANDOM)

- E1~DIM,A=2.0, DIM,B=8.0, DIM,C=3.2
- E2~DIM,A=2.0, DIM,B=8.35, DIM,C=3.2
- C0~DIM,A=1.5, DIM,B=2.0, DIM,C=3.2
- A2~DIM,A=2.0, DIM,B=3.0, DIM,C=2.3
-



RECOMMENDED P.C.B. LAYOUT

LEAD FREE PRODUCT	METRIC		Han Electronic
	DRAWN		
RoHS Directive compliant 2002/95/EC	APPROVER		TITLE MALE HEADER 1.27mm VERTICLE SINGLE ROW THROUGH HOLE
	DIMENSIONS ARE IN MILLIMETERS TOLERANCES		
X.X ±0.38 X.XX ±0.25 X.XXX ---- ANGULAR ±3°		PRODUCT NO. PHD**-***P1X**J6	SCALE N/A
THIRD ANGLE PROJECTION		SIZE A4	