

※NOTES※

MECHANICAL

- ① HOUSING : THERMOPLASTIC-PA6T, UL94V-0
- ② TERMINAL : PHOSPHOR BRONZE

SPECIFICATION

- ① CURRENT RATING : 1 AMP
- ② CONTACT RESISTANCE : 20mΩ MAX.
- ③ INSULATOR RESISTANCE : 1,000MΩ MIN.
- ④ WITHSTAND VOLTAGE : 500V AC/DC
- ⑤ OPERATION TEMPERATURE : -40°C ~ +105°C
- ⑥ PROCESSING PEAK-TEMPERATURE : 260°C FOR 5 SECONDS

PRODUCT ORDER OPTION

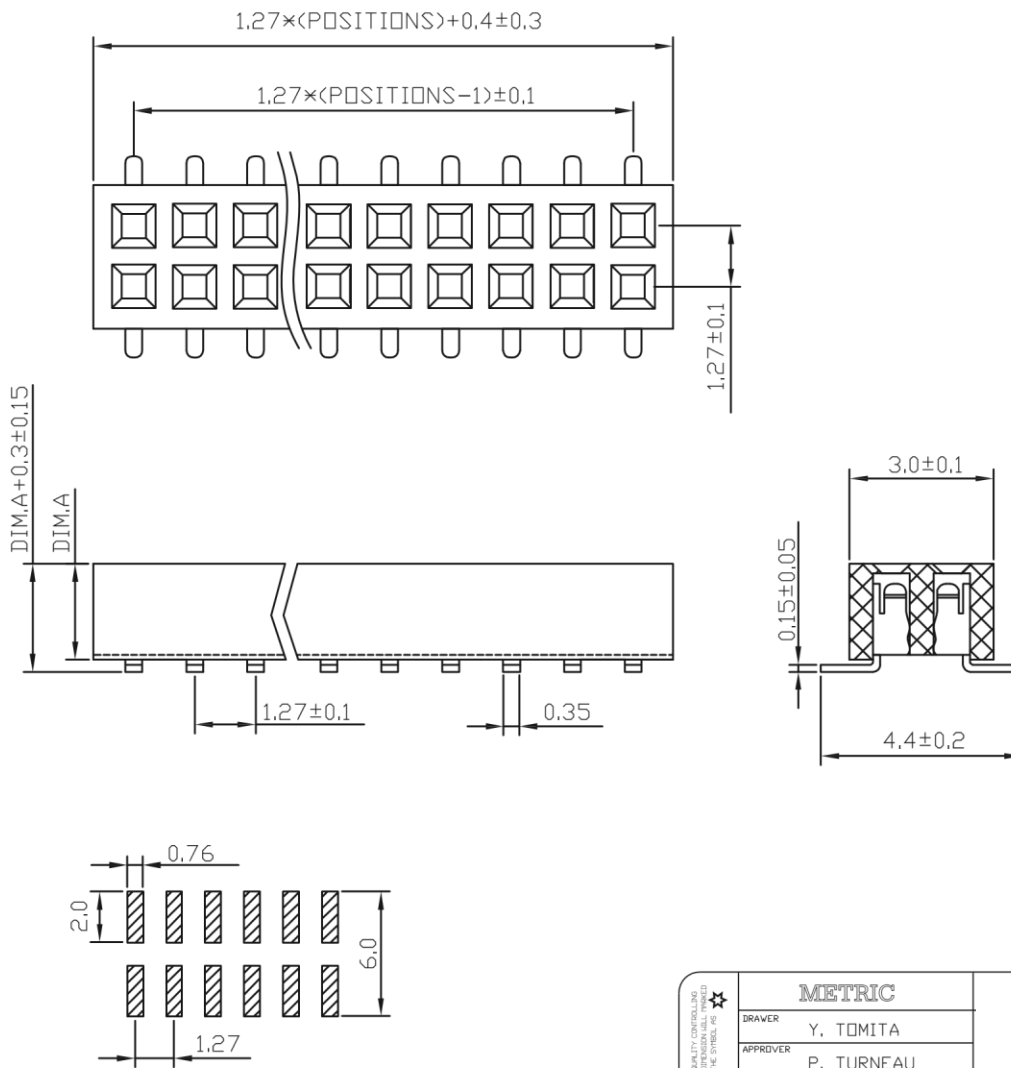
RHDC * -3 * * * 2X ** J7

- POSITION NO. (02~40 MAX.)
- PACKING METHOD
P~MOISTURE P.E. BAG
R~EMBOSS AND REEL

- PLATING
0~Au 0.2~1μ ON CONTACT AREA
1~Au 3μ ON CONTACT AREA
4~Au 15μ ON CONTACT AREA

- HOUSING COLOR
1~BLACK
2~WHITE

- DIMENSION CODE (SYS. GEN.)
1~DIM.A=2.0mm
3~DIM.A=2.2mm
5~DIM.A=4.3mm
7~DIM.A=4.6mm
0~DIM.A=8.5mm



RECOMMENDED P.C.B. LAYOUT

QUALITY CONTROLING DEPENDABLE PRODUCT THE SYMBOL AS ★	METRIC		Han Electronic
	DRAWER	Y. TOMITA	
RoHS COMPLIANT	APPROVER	P. TURNEAU	DIMENSIONS ARE IN MILLIMETERS TOLERANCES X. ±0.30 X.X ±0.15 X.XX ±0.05 X.XXX ---- ANGLES ±5°
	DO NOT SCALE DRAWINGS		
HIF HIGHER FREE	THIRD ANGLE PROJECTION		PRODUCT NUMBER RHDC*-3***2X**J7
LEAD FREE	SIZE A4	REV.	SCALE NONE
		SHEET 1 OF 1	