

**NOTES:** ( UNLESS OTHERWISE SPECIFIED )

**MATERIALS**

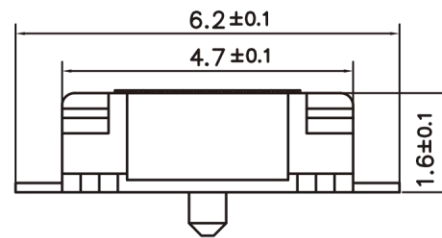
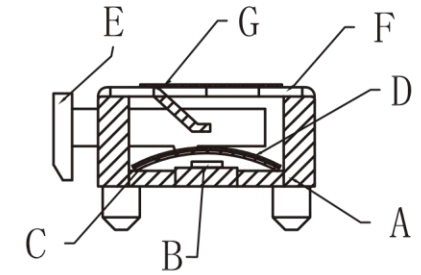
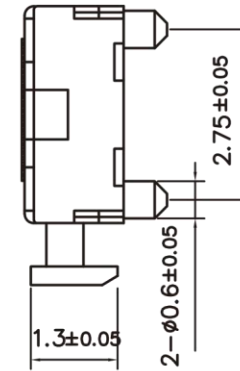
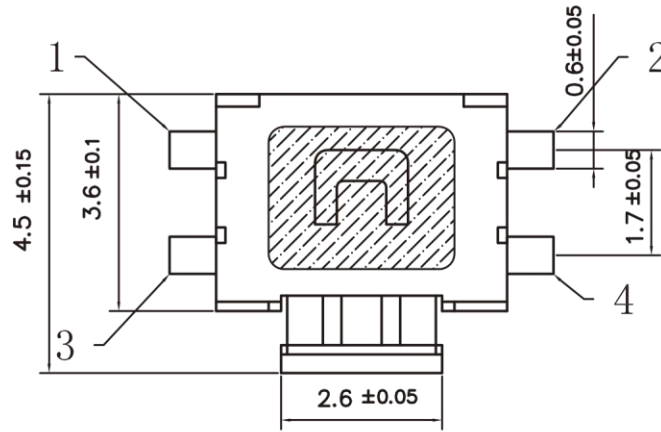
- A PLASTIC BASE : THERMOPLASTIC-LCP, UL 94V-0, COLOR BLACK
- B DIVIDER : C5191R-H, T=0.2mm
- C SPRING : SUS, T=0.05mm
- D INTERNAL PLASTIC FILM : PLOYIMIDE, T=0.07mm, COLOR YELLOW
- E STEM : PA 46 TW 271F6, UL 94V-0, COLOR BLACK
- F COVER : SUS 301-3/4H, T=0.15mm
- G MYLAR FILM : POLYIMIDE, T=0.05mm

**PLATINGS**

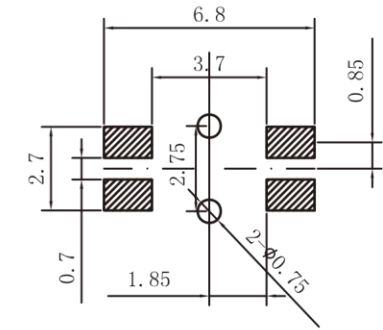
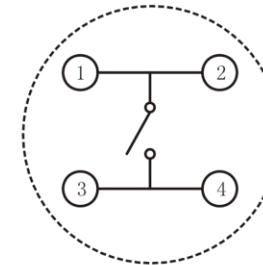
- 1 DIVIDER : SILVER PLATED
- 2 SPRING : SILVER PLATED

**SPECIFICATIONS**

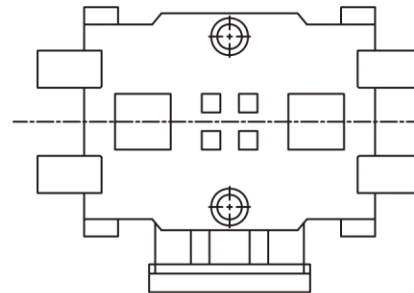
- 1 CURRENT RATING : 50mA MAX.
- 2 VOLTAGE RATING : 12V DC
- 3 CONTACT RESISTANCE : 50mΩ MAX.
- 4 INSULATION RESISTANCE : 100MΩ MIN.
- 5 COMPRESSIVE STRENGTH : 2.50V AC 50Hz/1 Min.
- 6 OPERATING FORCE : 2.50±50gf
- 7 MECHANICAL LIFE : 100,000 CYCLES MIN.
- 8 OPERATION STROKE : 0.25±0.1mm
- 9 TEMPERATURE RANGE : -30°C ~ +85°C
- 10 WAVE SOLDERING PEAK TEMPERATURE : 255°C~265°C FOR 5 SECS.



**SCHEMATIC**



**RECOMMENDED  
CIRCUIT BOARD LAYOUT**



METRIC		Han Electronic	
DRAWER K.KITAGAWA		NOTICE OF PROPRIETARY THIS DRAWING CONTAINS INFORMATION THAT IS PROPRIETARY OF WIROS ELECTRONICS INTERNATIONAL COMPANY LIMITED AND SHOULD NOT BE USED WITHOUT WRITTEN PERMISSION OR CONSENT	
APPROVER Y.TOMITA			
DIMENSIONS ARE IN MILLIMETERS TOLERANCES		TITLE	
XX	±0.20	TACT SWITCH HORIZONTAL SMD, 4.7x3.6x1.6mm (HALOGEN FREE)	
X.XX	±0.10		
X.XXX	±0.05		
ANGULAR	±3°		
DO NOT SCALE DRAWING		PRODUCT NUMBER	
		TS08-A03-02E	
THIRD ANGLE PROJECTION		SIZE	SCALE
		A4	4:1
		SHEET NO	1 OF 1

