

※NOTES※

MECHANICAL

- ① HOUSING : THERMOPLASTIC-LCP, UL94V-0, BLACK
- ② TERMINAL : COPPER ALLOY
- ③ SHIELD : STAINLESS STEEL

SPECIFICATION

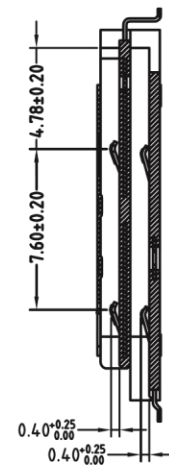
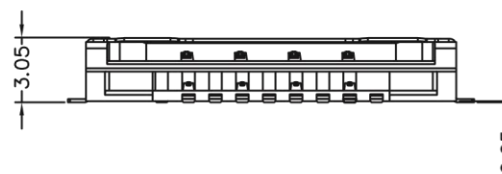
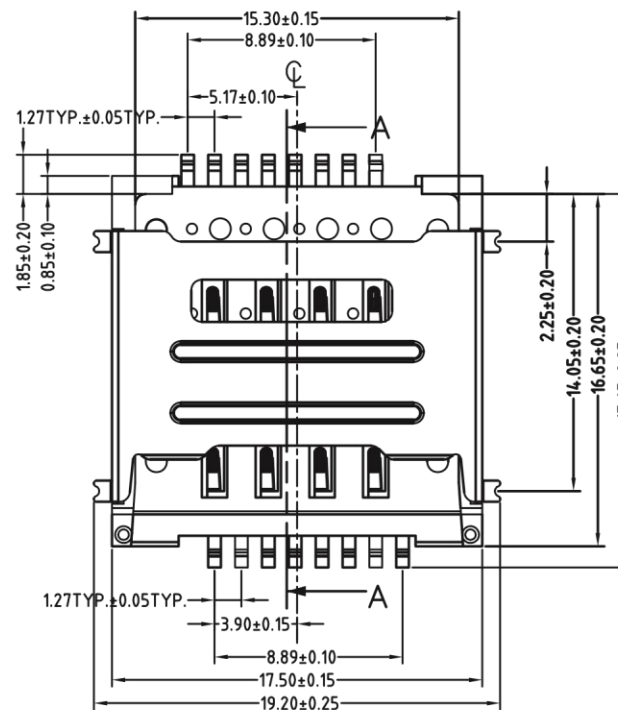
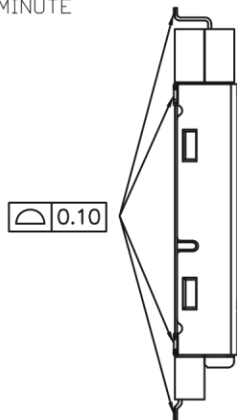
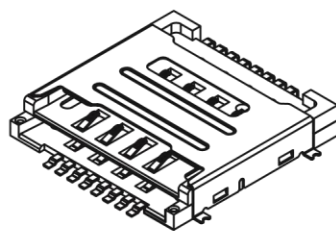
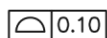
- ① RATING : 30V, 0.5 AMPERE MAX.
- ② DIELECTRIC WITHSTANDING VOLTAGE : 200V AC FOR 1 MINUTE
- ③ CONTACT RESISTANCE : 100mΩ MAX.
- ④ INSULATION RESISTANCE : 100MΩ MIN.
- ⑤ DURABILITY : 5,000 CYCLES MIN.
- ⑥ WAVE SOLDERING PEAK TEMPERATURE
LCP - 265±5°C FOR 5 SEC(s).
- ⑦ OPERATION TEMPERATURE : -40°C ~ + 85°C
- ⑧ THIS IS A RoHS COMPLIANTS PRODUCT.

PRODUCT ORDER OPTION

ZCR12-11 * R016J3

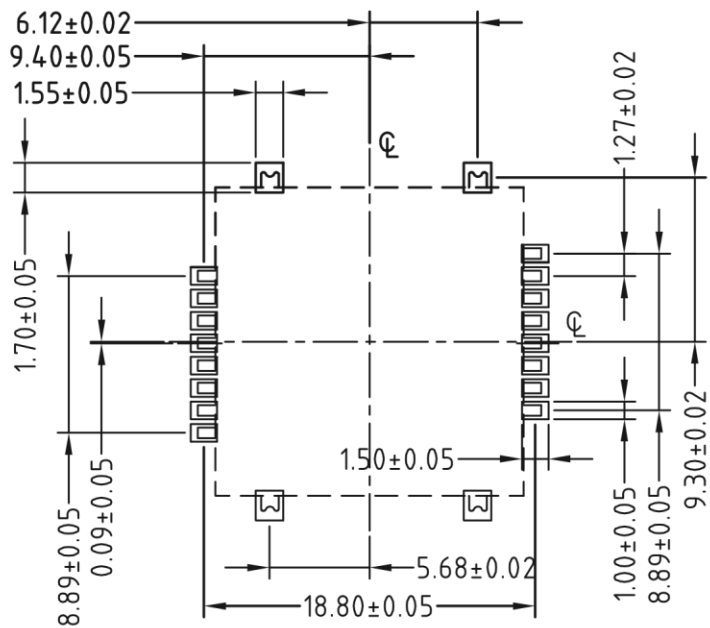
PLATING

- 0~Au 0.2~1μ ON CONTACT AREA,
- 1~Au 3μ ON CONTACT AREA
- 4~Au 15μ ON CONTACT AREA

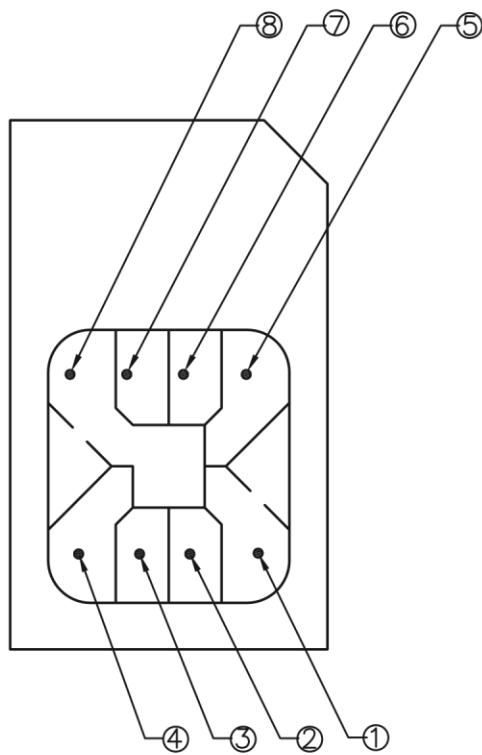


SECTION A-A

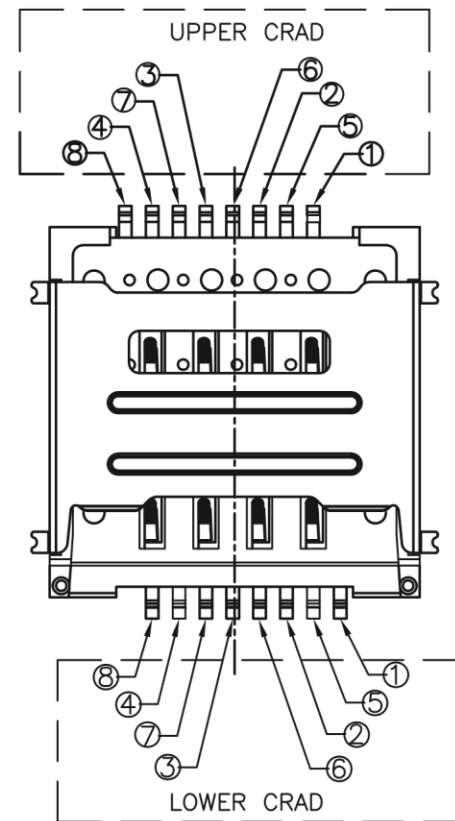
QUALITY CONTROLING 品質管理 THE SYMBOL AS ★	METRIC		Han Electronic	
	DRAWER	S. HUANG		
	APPROVER	W. SPRING		
DIMENSIONS ARE IN MILLIMETERS TOLERANCES	X. --- X.X ±0.15 X.XX ±0.10 X.XXX ±0.08 ANGLES ±1°		TITLE DUAL SIM CARD SURFACE MOUNT CONNECTOR (HEIGHT=3.05mm)	
DO NOT SCALE DRAWINGS	THIRD ANGLE PROJECTION		PRODUCT NUMBER ZCR12-11×R016J3	
SIZE A4	REV.	SCALE NONE	SHEET 1 OF 2	



RECOMENDED PCB LAYOUT



TOP VIEW
SIM CARD



TOP VIEW
STACKED SOCKET

- Pin1. Reserved
- Pin2. CLK
- Pin3. RST
- Pin4. VCC
- Pin5. Reserved
- Pin6. I/O
- Pin7. VPP
- Pin8. GND

QUALITY CONTROLING 品質管理 THE SYMBOL IS ★	METRIC		Han Electronic	
	DRAWER	S. HUANG		
	APPROVER	W. SPRING		
RoHS COMPLIANT	DIMENSIONS ARE IN MILLIMETERS TOLERANCES		TITLE	
	X.	----	DUAL SIM CARD SURFACE MOUNT CONNECTOR (HEIGHT=3.05mm)	
X.X	±0.15			
X.XX	±0.10			
X.XXX	±0.08			
	ANGLES	±1°		
HIF HIGHER FREE	DO NOT SCALE DRAWINGS		PRODUCT NUMBER	
			ZCR12-11×R016J3	
THIRD ANGLE PROJECTION	SIZE A4	REV.	SCALE NONE	SHEET 2 OF 2