

※NOTES※

MECHANICAL

- ① HOUSING : THERMOPLASTIC, UL94V-0, BLACK, HALOGEN FREE
- ② TERMINAL : COPPER ALLOY, SELECTIVE GOLD PLATED ON CONTACT AREA, NICKEL UNDER-PLATED OVERALL.

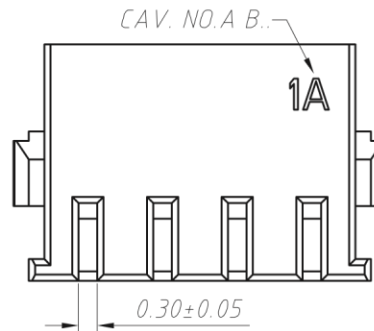
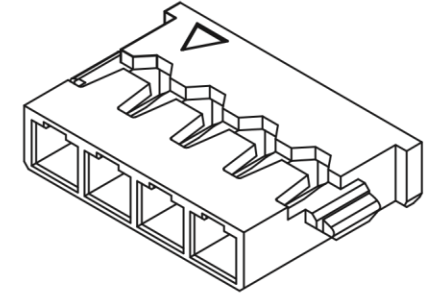
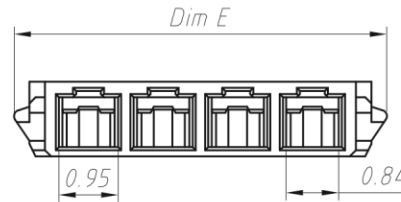
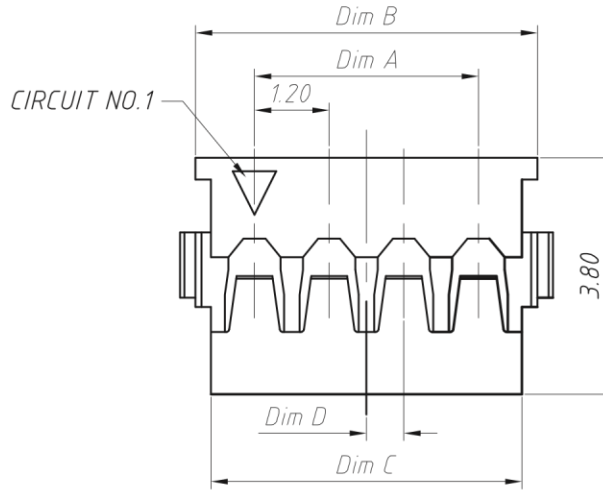
PRODUCT ORDER OPTION

PWB36-11 * P0 ** H7

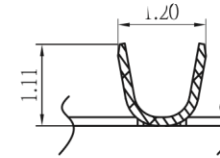
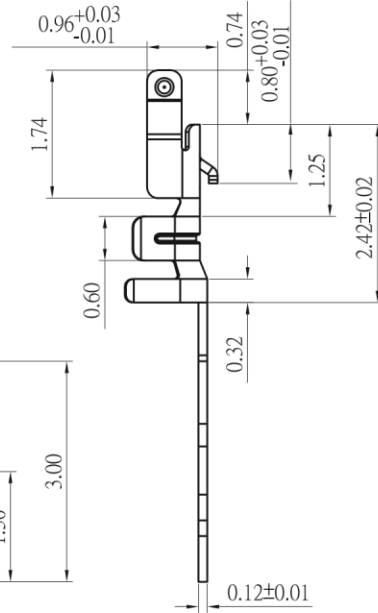
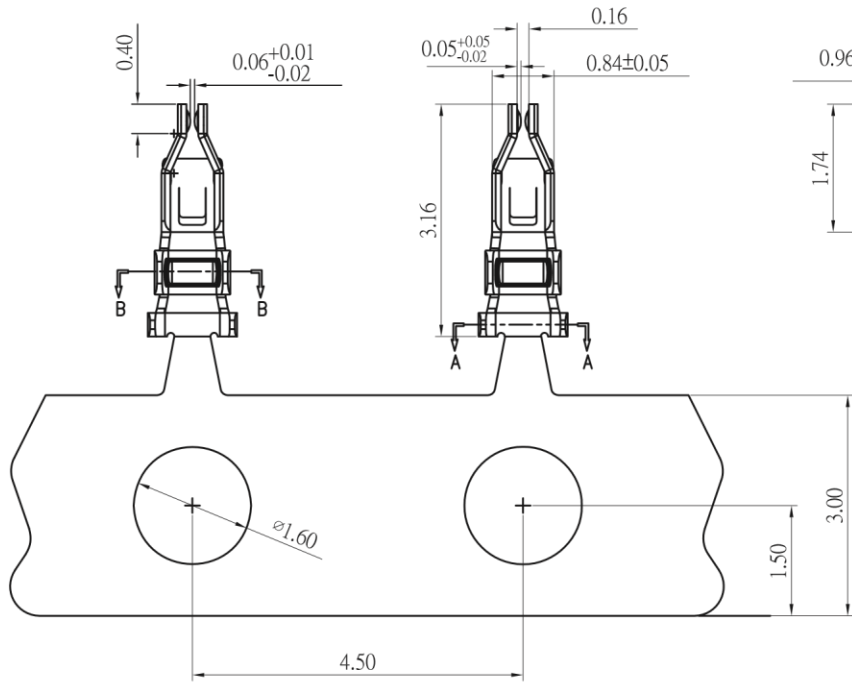
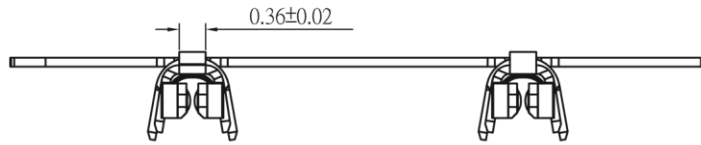
CKT. NO.

PLATING
 0~Au 0.2~1μ ON CONTACT AREA
 J~Sn 80~100μ OVERALL

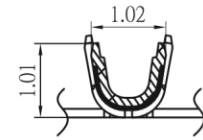
| CKT | DIM.A | DIM.B | DIM.C | DIM.D | DIM.E |
|-----|-------|-------|-------|-------|-------|
| 02 | 1.2 | 3.1 | 2.6 | 0.6 | 3.6 |
| 03 | 2.4 | 4.3 | 3.8 | 1.2 | 4.8 |
| 04 | 3.6 | 5.5 | 5.0 | 0.6 | 6.0 |
| 05 | 4.8 | 6.7 | 6.2 | 1.2 | 7.2 |
| 06 | 6.0 | 7.9 | 7.4 | 0.6 | 8.4 |
| 07 | 7.2 | 9.1 | 8.6 | 1.2 | 9.6 |
| 08 | 8.4 | 10.3 | 9.8 | 0.6 | 10.8 |
| 09 | 9.6 | 11.5 | 11.0 | 1.2 | 12.0 |
| 10 | 10.8 | 12.7 | 12.2 | 0.6 | 13.2 |
| 11 | 12.0 | 13.9 | 13.4 | 1.2 | 14.4 |
| 12 | 13.2 | 15.1 | 14.6 | 0.6 | 15.6 |
| 13 | 14.4 | 16.3 | 15.8 | 1.2 | 16.8 |
| 14 | 15.6 | 17.5 | 17.0 | 0.6 | 18.0 |
| 15 | 16.8 | 18.7 | 18.2 | 1.2 | 19.2 |



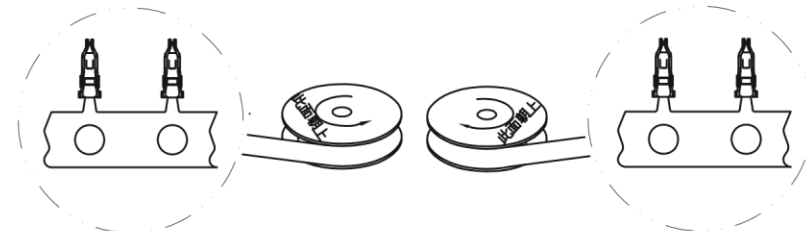
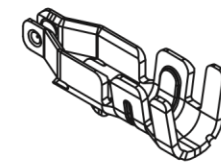
| | | | | |
|-----------------------------------------------------|------------------------------------------------------------------|-----------------------|---------------------------------------------------------------------------------------|--|
| QUALITY CONTROLING 品質管理 THE SYMBOL AS ★ | METRIC | | Han Electronic | |
| | DRAWER | Y. TOMITA | | |
| | APPROVER | P. TURNEAU | TITLE PITCH 1.20mm WIRE TO BOARD CONNECTOR PLUG, HOUSING PUSH-TYPE | |
| | DIMENSIONS ARE IN MILLIMETERS TOLERANCES | | | |
| RoHS COMPLIANT RoHS EXEMPTED HLF LEAD FREE | X. ±0.30 X.X ±0.25 X.XX ±0.15 X.XXX ±0.10 ANGLES ±2° | DO NOT SCALE DRAWINGS | | |
| THIRD ANGLE PROJECTION | PRODUCT NUMBER PWB36-11*P0**H7 | SCALE 5 : 1 | SHEET 1 OF 2 | |
| SIZE A4 | REV. | | | |



SECTION A-A



SECTION B-B



WIND OPERATION AFTER STAMPING AND BEFORE PLATING

WIND OPERATION AFTER PLATING AND BEFORE ASSEMBLY

| | | | | |
|-------------------------------------------------------------------------------------------------------|------------------------------------------------------------------|------------|---------------------------------------------------------------------------------------|--|
| QUALITY CONTROLING 品質管理 監査 THE SYMBOL AS ★ | METRIC | | Han Electronic | |
| | DRAWER | Y. TOMITA | | |
| <input checked="" type="checkbox"/> RoHS COMPLIANT <input type="checkbox"/> HFP HIGHER PERFORMANCE | APPROVER | P. TURNEAU | TITLE PITCH 1.20mm WIRE TO BOARD CONNECTOR PLUG, HOUSING PUSH-TYPE | |
| <input checked="" type="checkbox"/> LEAD FREE | DIMENSIONS ARE IN MILLIMETERS TOLERANCES | | | |
| | X. ±0.30 X.X ±0.25 X.XX ±0.15 X.XXX ±0.10 ANGLES ±2° | | PRODUCT NUMBER PWB36-11xP0xH7 | |
| | DO NOT SCALE DRAWINGS | | | |
| | THIRD ANGLE PROJECTION | | SCALE 5 : 1 | |
| SIZE | A4 | REV. | | |