

※NOTES※

PHYSICAL

- ① HOUSING : HIGH-TEMPERATURE THERMOPLASTIC, UL94V-0
- ② CONTACTS : PHOSPHOR BRONZE
- ③ OPERATING TEMPERATURE : -40°C~+85°C
- ④ PEAK TEMPERATURE FOR WAVE SOLDERING : 250±5°C FOR 5 SECS.

MECHANICAL

- ① MATING FORCE : 5 POUNDS MAX.
- ② UNMATING FORCE : 10 POUNDS MAX.
- ③ DURABILITY : 1,000 CYCLES MAX.

- ※※ MATES WITH MODULAR JACK PLUG WHICH DIMENSION MUST CONFORMING TO FCC PART 68, SUBPART F.
- ※※ THIS IS A ROHS COMPLIANTS, AND LEAD FREE PRODUCT.
- ※※ 100% TESTED FOR FUNCTIONALITY PER IEEE 802.3 REQUIREMENTS.

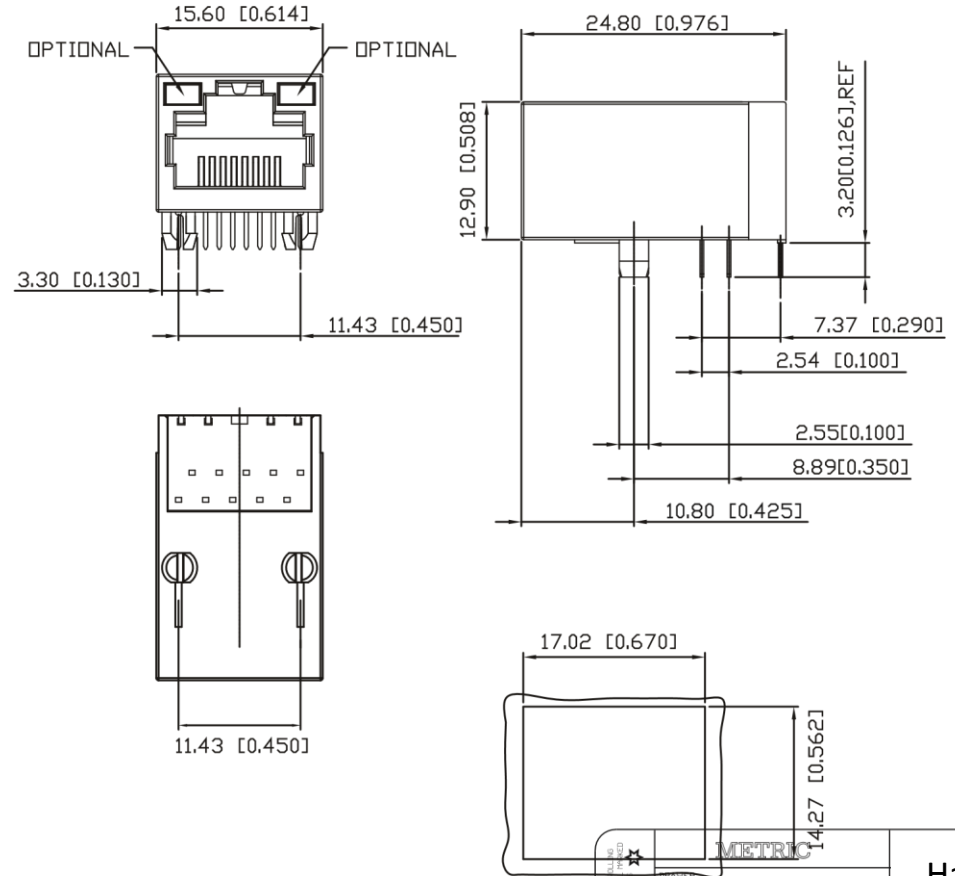
ORDER INFORMATION

RMG11 - 51 \* T012PU - F11N \* \* N

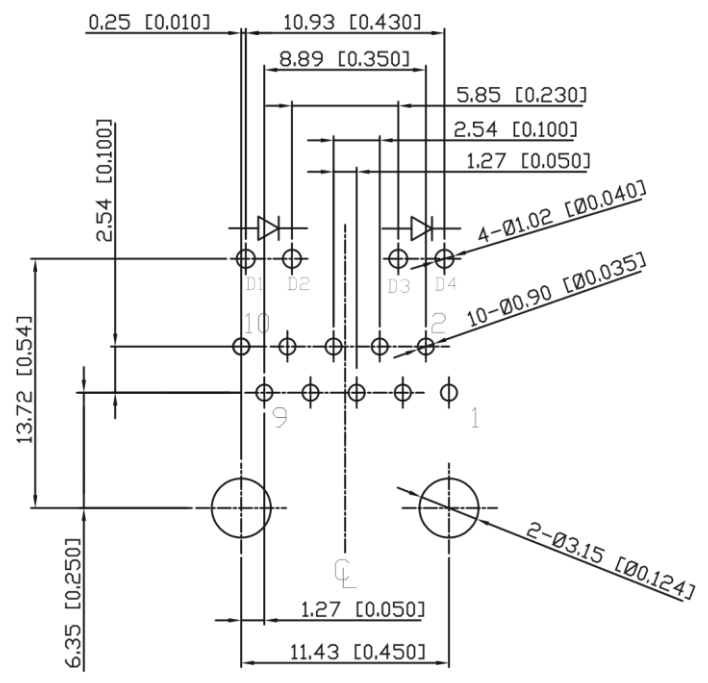
LED COLOR<RIGHT>  
 4~GREEN      6~ORANGE  
 7~RED        0~YELLOW  
 N-NONE        -----

LED COLOR<LEFT>  
 SAME AS ABOVE

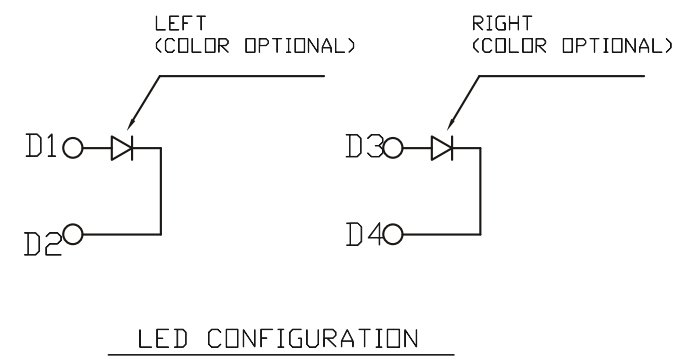
PLATING  
 0~Au 0.2~1μ ON CONTACT AREA  
 2~Au 6μ ON CONTACT AREA  
 6~Au 30μ ON CONTACT AREA  
 8~Au 30μ ON CONTACT AREA  
 -----



RoHS COMPLIANT HFP LEAD FREE	DRAWER Y. TOMITA	Han Electronic
	APPROVER P. TURNEAU	
DIMENSIONS ARE IN MILLIMETERS TOLERANCES X. ±0.50 X.X ±0.38 X.XX ±0.25 X.XXX ±0.10 ANGLES ±3°		TITLE MODULAR JACK GIGABIT MAGNETIC TAB-UP, W/LED W/O SHIELD
DO NOT SCALE DRAWINGS THIRD ANGLE PROJECTION		
SIZE A4	REV.	PRODUCT NUMBER RMG11-51*T012PU-F11N**N
SCALE NONE		SHEET OF 3



SUGGESTED PCB LAYOUT  
(TOP VIEW)

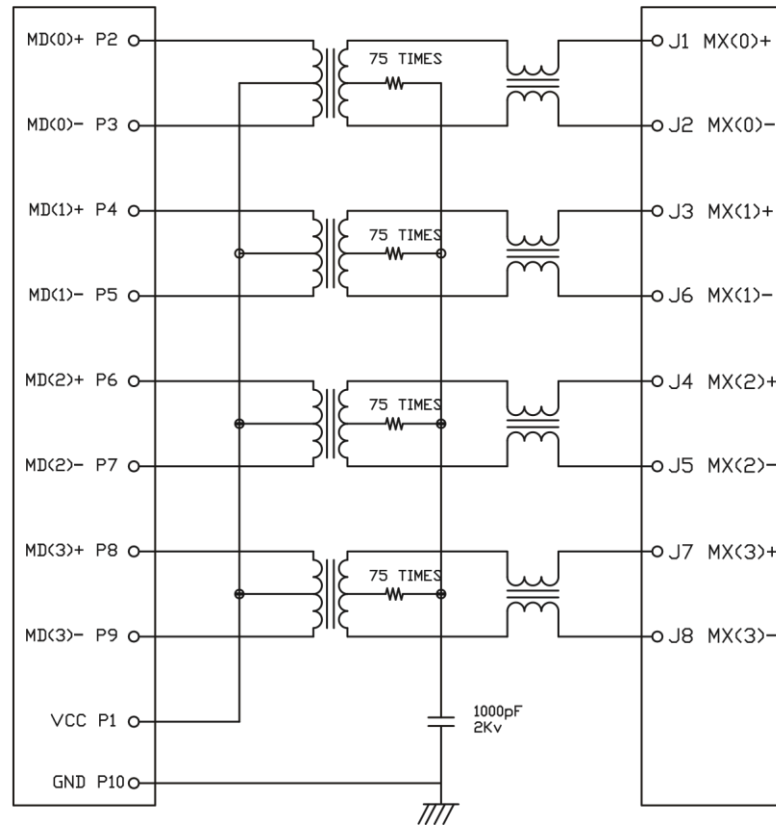


HAS IT? <input type="checkbox"/> <b>RoHS</b> COMPLIANT <input type="checkbox"/> <b>HP</b> <small>WARRANTY</small> <input checked="" type="checkbox"/> <b>LEAD-FREE</b>	<b>METRIC</b>	<b>Han Electronic</b>	
	DRAWER APPROVER DIMENSIONS ARE IN MILLIMETERS TOLERANCES X. ±0.50 X.X ±0.38 X.XX ±0.25 X.XXX ±0.10 ANGLES ±3° DO NOT SCALE DRAWINGS THIRD ANGLE PROJECTION	DRAWER Y. TOMITA APPROVER P. TURNEAU TITLE MODULAR JACK GIGABIT MAGNETIC TAB-UP, W/LED W/D SHIELD PRODUCT NUMBER RMG11-51×T012PU-F11N××N	SCALE NONE
SIZE <b>A4</b>	REV.		

SCHEMATIC

LAN CHIP SIDE

RJ CABLE SIDE



ELECTRICAL CHARACTERISTICS

TEST NOTES:(25°±5°C)

- TR:(100KHz,0.1V);  
PINS:(P2,P3):(J1,J2)=1:1±3%;(P4,P5):(J3,J6)=1:1±3%;  
PINS:(P6,P7):(J4,J5)=1:1±3%;(P8,P9):(J7,J8)=1:1±3%
- LX:(100KHz,100mV,8mA, DC Bias)  
PINS:(P2,P3),(P4,P5),(P6,P7),(P8,P9)=350uH MINIMUM
- DCR:  
PINS:(J1,J2),(J3,J6),(J4,J5),(J7,J8)=1.2Ω MAXIMUM
- HIPOT:  
PINS(P2,P3)TO(J1,J2),(P4,P5)TO(J3,J6)=1500VAC FOR 60 SECONDS  
PINS(P6,P7)TO(J4,J5),(P8,P9)TO(J7,J8)=1500VAC FOR 60 SECONDS
- INSERTION LOSS:  
-0.8dB MAXIMUM AT 0.3MHz TO 100MHz;  
-1.2dB MAXIMUM AT 100MHz TO 120MHz
- RETURN LOSS:  
-18dB MINIMUM AT 0.5MHz TO 40MHz;  
-12+20Log(f/80MHz)dB MINIMUM AT 40MHz TO 100MHz
- CROSS TALK:  
-33+20Log(f/100MHz)dB MINIMUM AT 0.1MHz TO 100MHz
- COMMON TO DIFFERENTIAL MODE REJECTION:  
-35dB MINIMUM AT 300KHz TO 100MHz
- COMMON TO COMMON MODE REJECTION:  
-30dB MINIMUM AT 300KHz TO 100MHz

METRIC DRAWER APPROVER	Y. TOMITA P. TURNEAU	<b>Han Electronic</b>  TITLE MODULAR JACK GIGABIT MAGNETIC TAB-UP, W/LED W/D SHIELD
	DIMENSIONS ARE IN MILLIMETERS TOLERANCES X. ±0.50 X.X ±0.38 X.XX ±0.25 X.XXX ±0.10 ANGLES ±3°	
DO NOT SCALE DRAWINGS THIRD ANGLE PROJECTION	PRODUCT NUMBER RMG11-51×T012PU-F11N××N	SCALE NONE
SIZE <b>A4</b>	REV. NONE	SHEET OF 3