

**NOTES :** (UNLESS OTHERWISE SPECIFIED)

MATERIAL

- 1 HOUSING : THERMOPLASTIC, UL94V-0
- 2 CONTACT : COPPER ALLOY
- 3 SHIELD : COPPER ALLOY

SPECIFICATION

- 1 PIN NOT ELECTRICALLY CONNECTED MAYBE OMITTED  
PLEASE CHECK SCHEMATIC FOR OMITTED PINS.
- 2 MATE'S PLUG CONFORMING TO TIA-1096-A REGULATIONS.  
WAVE SOLDERING TEMPERATURE :
- 3 PBT - 250°C FOR 5 SECONDS  
PA66 - 265°C FOR 3 SECONDS
- 4 OPERATION TEMPERATURE : 0°C ~ +70°C
- 5 STORAGE TEMPERATURE : -40°C ~ +85°C

ORDER OPTION

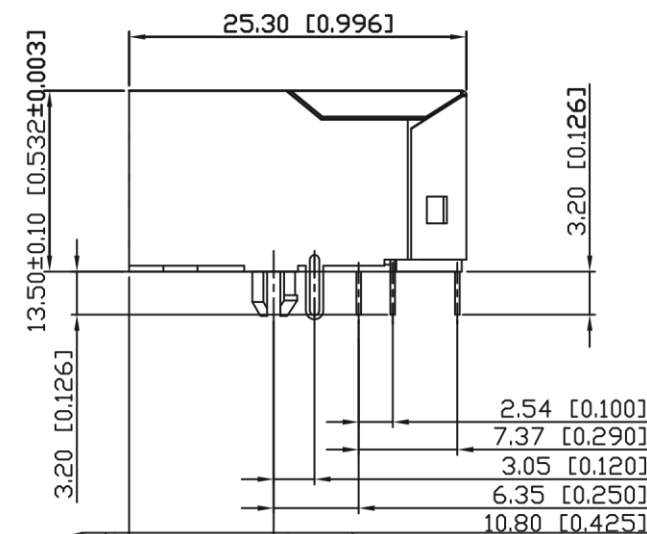
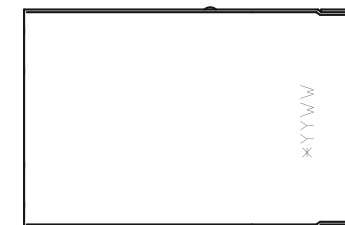
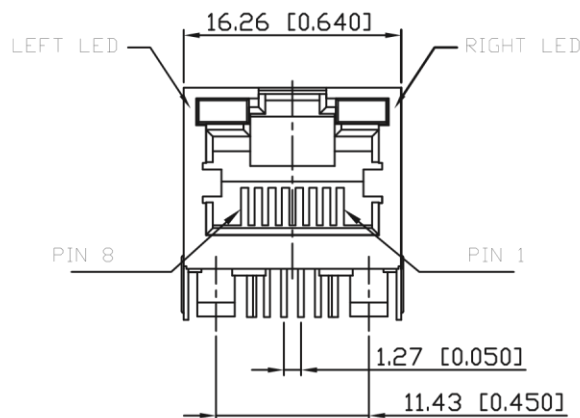
RMJ02 - \* 1 \* T008PU - F11S \* \* N

RIGHT LED  
3~WHITE 4~GREEN 6~ORANGE  
7~RED A~BLUE 0~YELLOW  
N~NO LED, CLOSED

LEFT LED  
(SAME AS ABOVE)

PLATING  
0~Au 0.2~1μ ON CONTACT AREA  
2~Au 6μ ON CONTACT AREA  
6~Au 30μ ON CONTACT AREA  
8~Au 50μ ON CONTACT AREA

HOUSING  
5~HIGH-TEMPERATURE PA66, UL94V-0  
6~HIGH-TEMPERATURE PBT, UL94V-0



RoHS compliant 2002/95/EC	<b>METRIC</b>	<b>Han Electronic</b>
	DRAWN Y. TOMITA APPROVER S. TAKESHI	
LEAD FREE PRODUCT	DIMENSIONS ARE IN MILLIMETERS TOLERANCES X.X ±0.38 X.XX ±0.25 X.XXX ±0.10 ANGULAR ±3°	TITLE MODULAR JACK 8P8C 10/100 MBPS, W/LED W/SHIELD, TAB UP THROUGH HOLE
	THIRD ANGLE PROJECTION	PRODUCT NO. RMJ02-*1*T008PU-F11S*x*N
	SIZE <b>A4</b>	SHEET NO. OF 3
		SCALE 1 : 1

4

3

2

1

RECOMMENDED CIRCUIT BOARD LAYOUT

LED CONFIGUATION

D

D

C



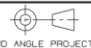
C

B

B

A

A

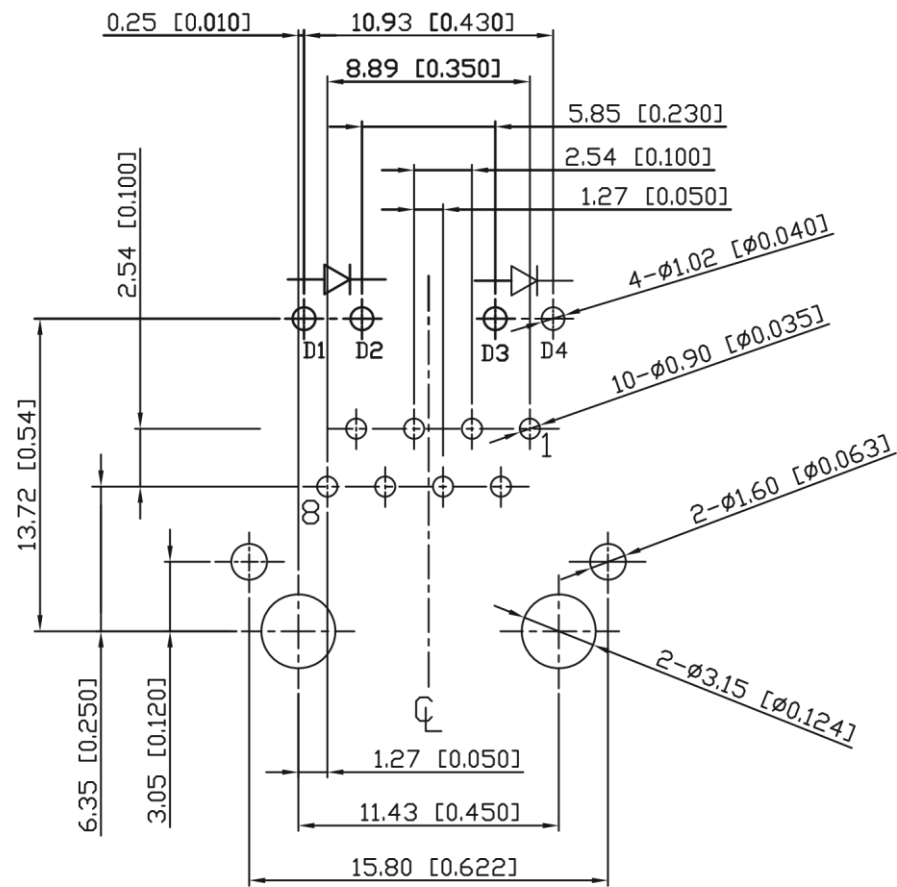
 RoHS Directive compliant 2002/95/EC	 <b>METRIC</b>	<b>Han Electronic</b>
	DIMENSION Y. TOMITA APPROVER S. TAKESHI	
DIMENSIONS ARE IN MILLIMETERS TOLERANCES X.X ±0.38 X.XX ±0.25 X.XXX ±0.10 ANGULAR ±3°	TITLE MODULAR JACK 8P8C 10/100 MBPS, W/LED W/SHIELD, TAB UP THROUGH HOLE	
	 THIRD ANGLE PROJECTION	SIZE <b>A4</b>
		SCALE 1 : 1

4

3

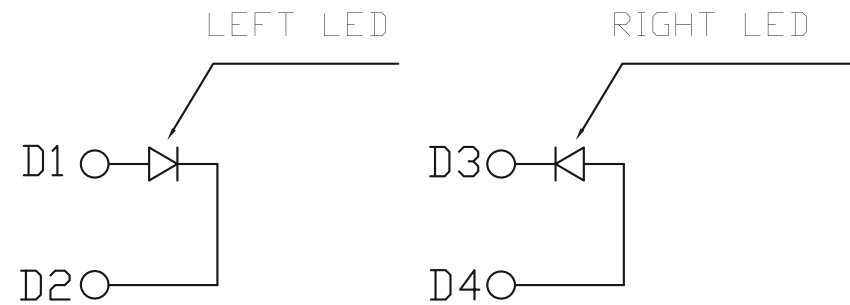
2

1



SUGGESTED PCB LAYOUT  
(TOP VIEW)

DIMENSIONAL TOLERANCE: .XX ±0.08[0.003]

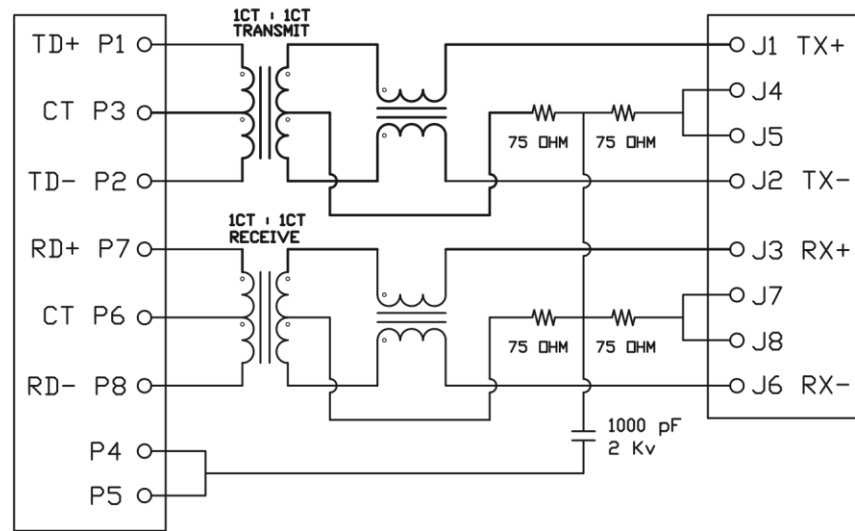


RoHS Directive compliant 2002/95/EC	DRAWN Y. TOMITA	TITLE MODULAR JACK 8P8C 10/100 MBPS, W/LED W/SHIELD, TAB UP THROUGH HOLE
	APPROVER S. TAKESHI	
DIMENSIONS ARE IN MILLIMETERS TOLERANCES X.X ±0.38 X.XX ±0.25 X.XXX ±0.10 ANGULAR ±3°	PRODUCT NO. RMJ02-x1xT008PU-F11SxxN	SHEET NO. OF 3
THIRD ANGLE PROJECTION	SIZE A4	SCALE 1 : 1

# SCHEMATIC

CONNECTOR SOLDER SIDE

RJ45 CONTACT SIDE



# ELECTRICAL CHARACTERISTICS

TEST NOTES:(25±5°C)

1.TR:(100KHz,0.1V);

PINS:(P1-P2):(J1-J2)=1:1±3%

PINS:(P7-P8):(J3-J6)=1:1±3%

2.LX:(100KHz,100mV,8mA, DC Bias)

PINS: (P1,P2),(P7,P8)=350uH MINIMUM

3.DCR:

PINS:(J1-J2),(J3-J6)= 1.2 OHMS MAXIMUM

4.HIPOT:

PINS(P1,P3,P2)TO(J1,J2)=1500VAC FOR 60 SECONDS

PINS(P7,P6,P8)TO(J3,J6)=1500VAC FOR 60 SECONDS

5.INSERTION LOSS:

-1.0dB MAXIMUM AT 0.3MHz TO 100MHz;

6.RETURN LOSS:

-20dB MINIMUM AT 1MHz TO 30MHz;

-15dB MINIMUM AT 30MHz TO 60MHz

-10dB MINIMUM AT 60MHz TO 80MHz

7.CROSS TALK:

-30dB MINIMUM AT 1MHz TO 100MHz

8.COMMON TO COMMON MODE REJECTION:

-30dB MINIMUM AT 1MHz TO 100MHz

RoHS Directive compliant 2002/95/EC	LEAD FREE PRODUCT	<b>METRIC</b>	<b>Han Electronic</b>
	DRAWN Y. TOMITA	TITLE	
	APPROVER S. TAKESHI	MODULAR JACK 8P8C 10/100 MBPS, W/LED W/SHIELD, TAB UP THROUGH HOLE	
	DIMENSIONS ARE IN MILLIMETERS TOLERANCES	PRODUCT NO. RMJ02-x1xT008PU-F11SxxN	X.X ±0.38 X.XX ±0.25 X.XXX ±0.10 ANGULAR ±3°
THIRD ANGLE PROJECTION	SIZE <b>A4</b>	SCALE 1 : 1	