

NOTES : (UNLESS OTHERWISE SPECIFIED)

MATERIAL

- ① MOLDING : THERMOPLASTIC-LCP, UL94V-0
- ② CONTACT : COPPER ALLUY,
SELECTIVE GOLD PLATING
- ③ SHELL : SUS304-H, T=0.30mm±0.03mm,
NICKEL PLATED
- ④ SHIELD : SUS304-H, T=0.12mm±0.03mm

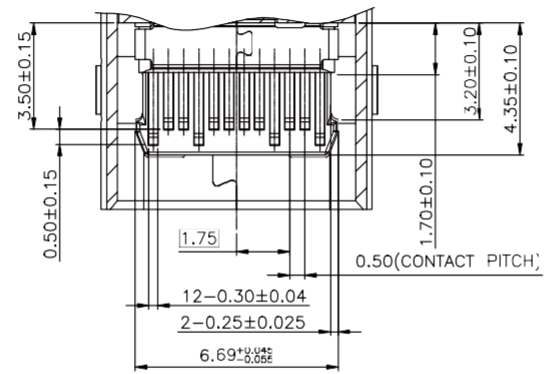
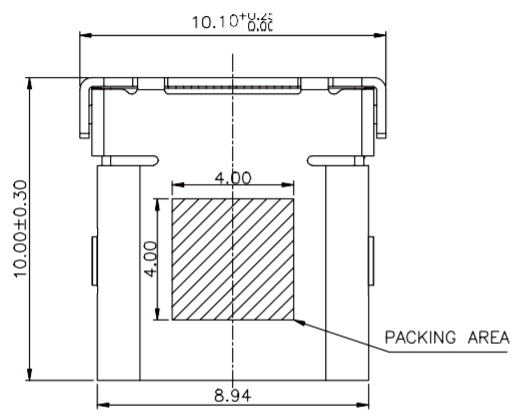
SPECIFICATION

- ① VOLTAGE RATING : 20V AC RMS
- ② CURRENT RATING :
5 AMPERES MIN FOR VBUS,
0.25 AMPERE MIN FOR OTHERS.
- ③ CONTACT RESISTANCE : 40mΩ MAX
- ④ INSULATION RESISTANCE : 100MΩ MIN
- ⑤ WITHSTAND VOLTAGE : 100V AC
- ⑥ MATING/UNMATING FORCE : 5~20N
- ⑦ DURABILITY : 10,000 MATING CYCLES MIN
- ⑧ OPERATING TEMPERATURE : -55°C ~ +85°C

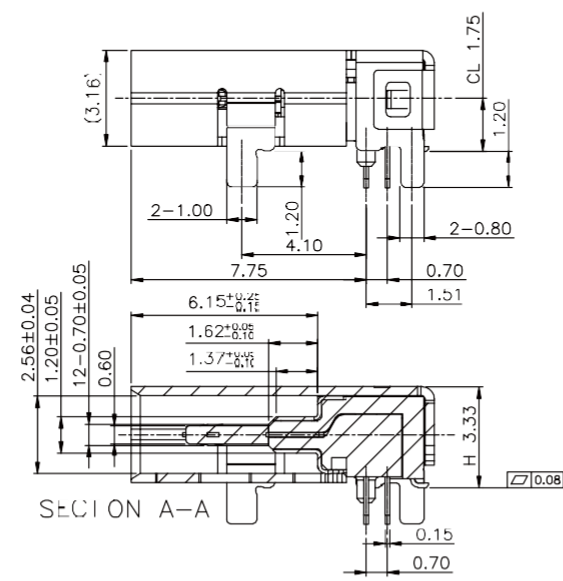
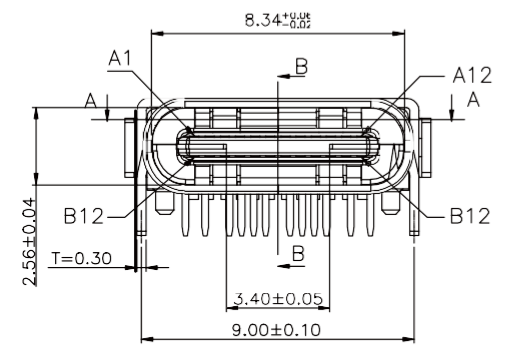
ORDER OPTIONS

RUC01-1 * * R024C3

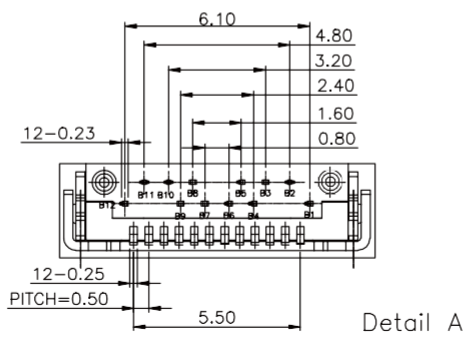
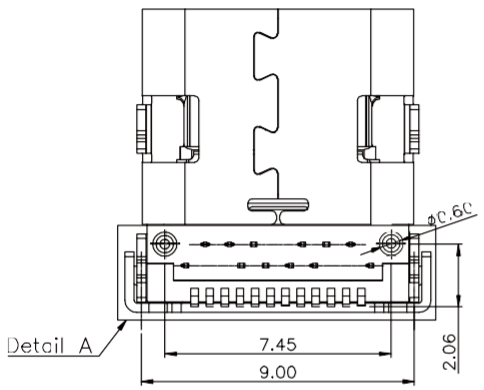
- PLATING
- 0~Au 0.2~1μ ON CONTACT AREA
- 1~Au 3μ ON CONTACT AREA
- 4~Au 15μ ON CONTACT AREA
- 6~Au 30μ ON CONTACT AREA
-
- HOUSING COLOR
- 1~BLACK
- 2~BEIGE
- A~BLUE
-



SECTION E-B

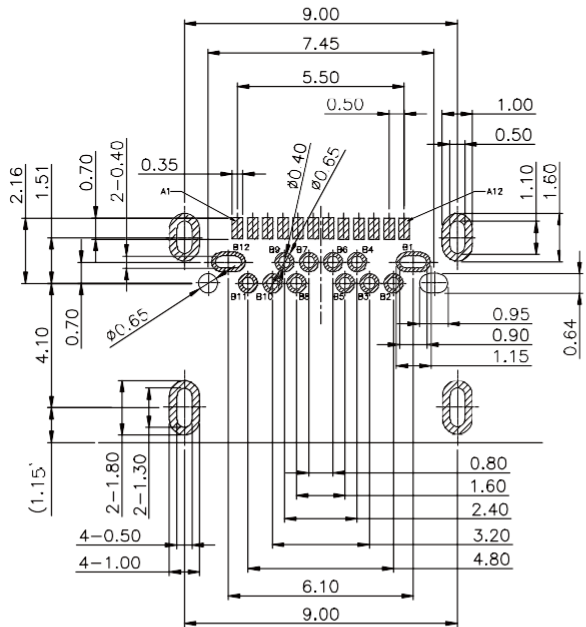
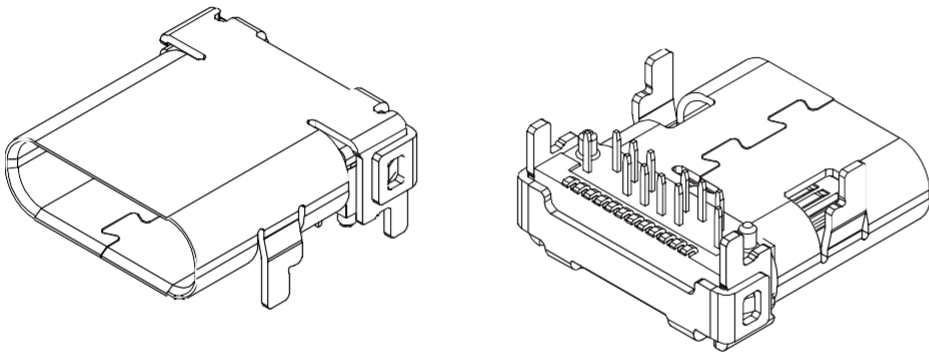


SECTION A-A



Detail A

RoHS	METRIC		Han Electronic	
	XXX ±0.38 XXX ±0.25 XXX ±0.10 ANGULAR ±3°			
RUC01-1**R024C3			USB 31 TYPE C RECEPTACLE THROUGH HOLE TYPE	
THIRD ANGLE PROJECTION			A4	1 UP 4
			1 : 1	



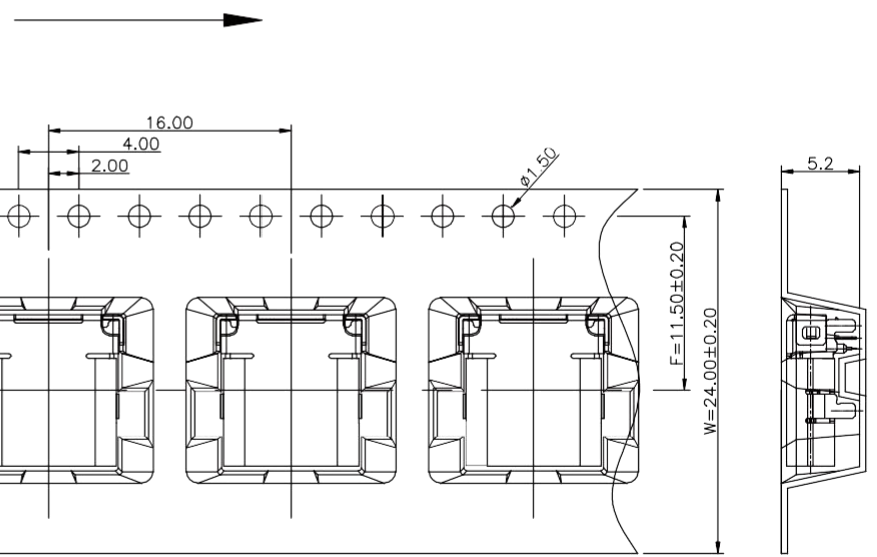
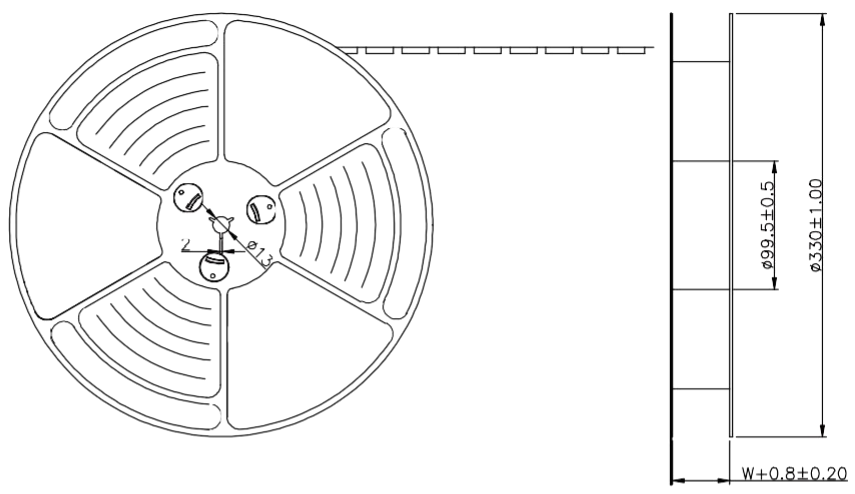
RECOMMENDED PCB LAYOUT
(COMPONENT SIDE)
TOLERANCE RANGE ±0.05mm
KEEP ULT AREA

USB TYPE-C FULL-FEATURED RECEPTACLE INTERFACE PIN ASSIGNMENTS

PIN	Signal Name	Description	PIN	Signal Name	Description
A1	GND	Ground return	B02	GND	Ground return
A2	SSTXp1	Positive half of first SuperSpeed TX differential pair	B00	SSRXp1	Positive half of first SuperSpeed RX differential pair
A3	SSTXm1	Negative half of first SuperSpeed TX differential pair	B01	SSRXm1	Negative half of first SuperSpeed RX differential pair
A4	VBUS	Bus Power	B9	VBUS	Bus Power
A5	CC1	Configuration Channel	B8	SB02	Sideband Use (SB0)
A6	Dp1	Positive half of the USB 2.0 differential pair-Position 1	B7	Dm2	Negative half of the USB 2.0 differential pair-Position 2
A7	Dm1	Negative half of the USB 2.0 differential pair-Position 1	B6	Dp2	Positive half of the USB 2.0 differential pair-Position 2
A8	SB01	Sideband Use (SB0)	B5	CC2	Configuration Channel
A9	VBUS	Bus Power	B4	VBUS	Bus Power
A00	SSRXm2	Negative half of second SuperSpeed RX differential pair	B3	SSTXm2	Negative half of second SuperSpeed TX differential pair
A01	SSRXp2	Positive half of second SuperSpeed RX differential pair	B2	SSTXp2	Positive half of second SuperSpeed TX differential pair
A02	GND	Ground return	B0	GND	Ground return

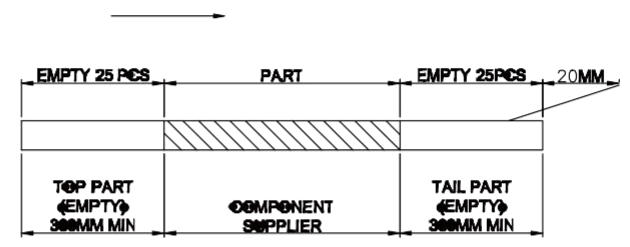
	METRIC		Han Electronic	
XX ±0.38 XXX ±0.25 XXXX ±0.10 ANGULAR ±3°	RUC01-1**R024C3		USB 3.1 TYPE C RECEPTACLE THROUGH HOLE TYPE	
			A4	2 UF 4

出料方向
PULL OUT DIRECTION

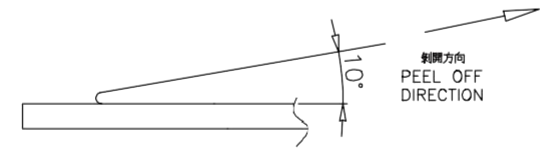


NOTES

1. 帶子引導長度
LEAD TAPE LENGTH
出料方向
PULL OUT DIRECTION

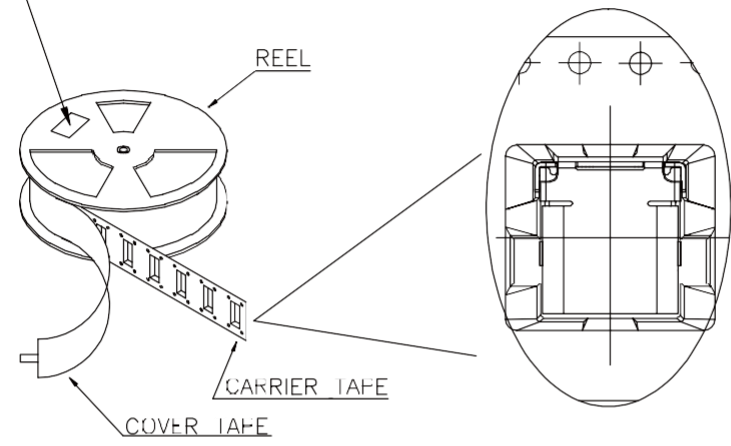
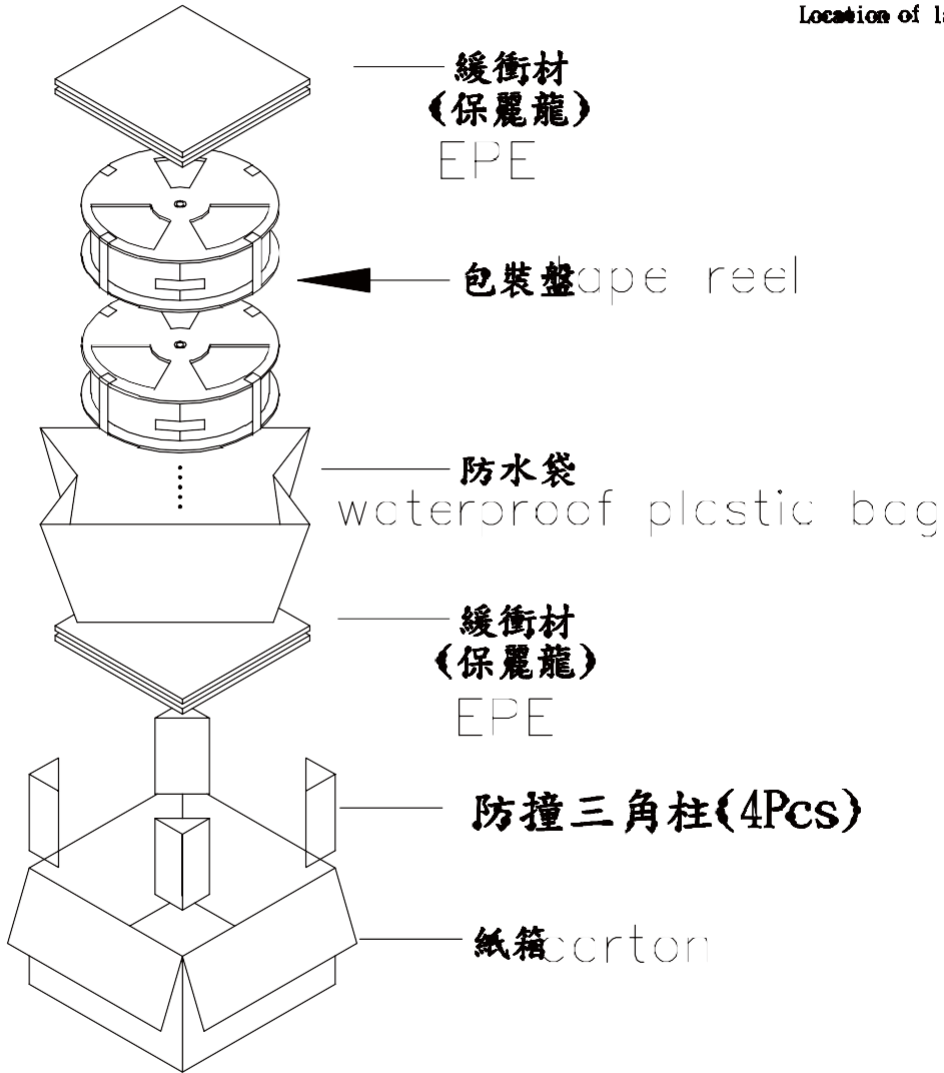


2. 上帶剝力力為: 0.1~1.3N(10.2gf~130gf)
PEELING OFF FORCE OF TCP TAPE: 0.1~1.3N(10.2gf~130gf)
出貨運輸過程中一定注意:
THIS REQUIREMENT SHOULD BE APPLIED AT SHIPMENT:
卷帶在運輸過程中不能散開
PEELING OFF SHOULD NOT BE ALLOWED DURING TRANSPORTATION



RoHS	METRIC		Han Electronic	
	XX ±0.38 XXX ±0.25 XXXX ±0.10 ANGULAR ±3°			
RUC01-1**R024C3			USB 31 TYPE C RECEPTACLE THROUGH HOLE TYPE	
THIRD ANGLE PROJECTION		A4	3 U F 4	1 : 1

※ small positioning hole of the carrier tape side.
 標籤黏貼處 (朝捲裝包材的小定位孔一側)
 Location of label sticking (label)



NOTE:

1. 每捲包裝數量及每箱裝箱數量如左下表格。
Packing q'ty of each reel & carton as below table shown.
2. 以上膠帶覆蓋下包裝帶經包裝機熱熔包裝。
Use cover tape to cover and hot melt machine to seal up.

總裝容量 (PACKING CAPACITY)			重量 WEIGHT (Kg)		
PCS/REEL	REELS/CARTON	PCS/CARTON	N.W./PCS	N.W./BOX	G.W./BOX
700	8	5600			

RoHS	METRIC		Han Electronic	
	THIRD ANGLE PROJECTION			
XX ±0.38		USB 3.1 TYPE C RECEPTACLE THROUGH HOLE TYPE		
XXX ±0.25				
XXX ±0.10		RUC01-1**R024C3		
ANGULAR ±3°				
A4		4 U# 4	1 : 1	