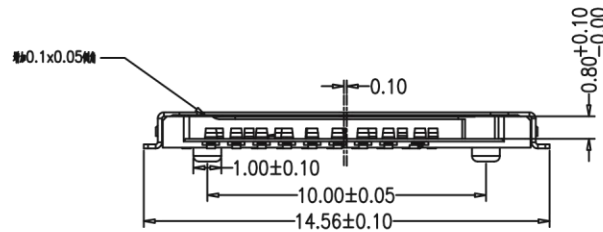
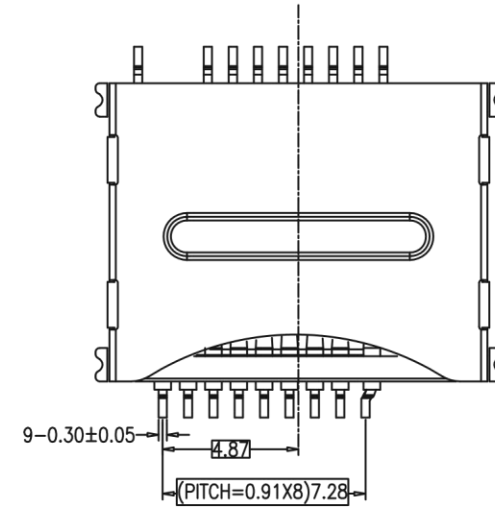
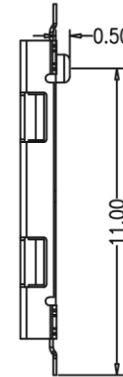
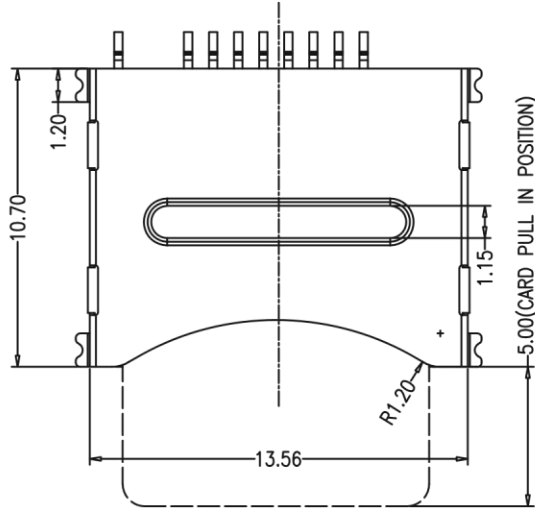
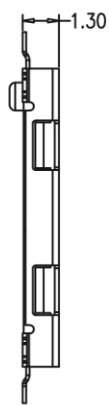
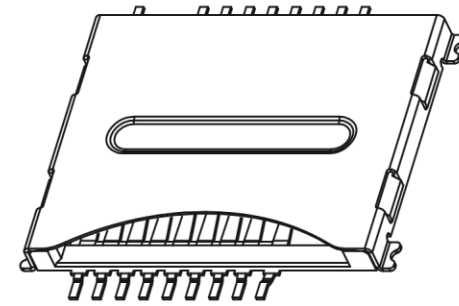
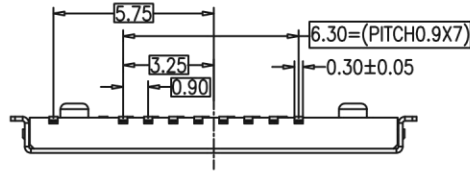


※NOTES※

MECHANICAL

- 1 HOUSING : THERMOPLASTIC-LCP, UL94V-0, BLACK
- 2 SHIELD : BRASS C2680, T=0.15mm
- 3 CONTACT(S) : COPPER ALLOY V5191, T=0.12mm



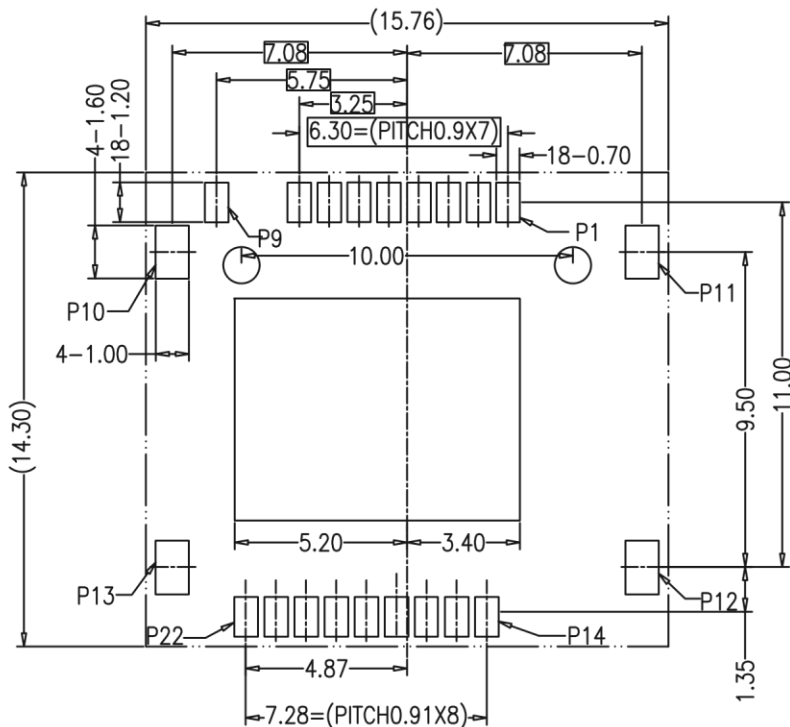
| | | | | |
|---|---------------|-----------------------------------|-----------------------|--|
| QUALITY CONTROLING 品質管理 品質保証 THE SYMBOL AS ★ | METRIC | | Han Electronic | |
| | DRAWER | Y. TOMITA | | |
| <input checked="" type="checkbox"/> RoHS COMPLIANT <input type="checkbox"/> HfP <input checked="" type="checkbox"/> LEAD FREE | APPROVER | P. TURNEAU | | TITLE T-FLASH CARD CONNECTOR SURFACE MOUNT TYPE |
| DIMENSIONS ARE IN MILLIMETERS TOLERANCES | | PRODUCT NUMBER ZCR06-11×R009G3 | | |
| DO NOT SCALE DRAWINGS | | THIRD ANGLE PROJECTION | | SCALE NONE |
| SIZE A4 | REV. | SHEET 1 OF 2 | | |

PRODUCT ORDER INFORMATION

ZCR06-11 * R009G3

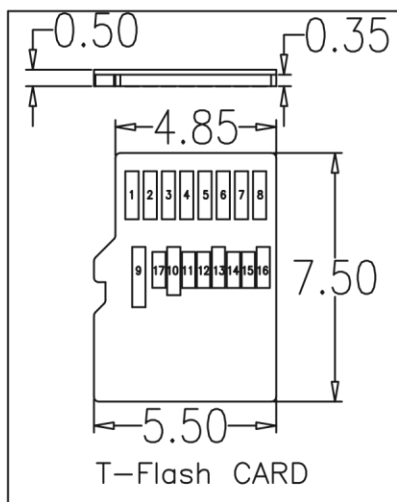
PLATING
 0~Au 0.2~1μ ON CONTACT AREA
 1~Au 3μ ON CONTACT AREA
 4~Au 15μ ON CONTACT AREA

| PIN NO. | FUNCTION |
|---------|----------|
| P1 | DAT2 |
| P2 | CD/DAT3 |
| P3 | CMD |
| P4 | VDD1 |
| P5 | CLK |
| P6 | VSS |
| P7 | DAT0 |
| P8 | DAT1 |
| P9 | CD |
| P10 | GND |
| P11 | GND |
| P12 | GND |
| P13 | GND |
| P14 | VDD2 |
| P15 | SWIO |
| P16 | VSS |
| P17 | DO+ |
| P18 | DO- |
| P19 | VSS |
| P20 | D1- |
| P21 | D1+ |
| P22 | VSS |



RECOMMENDED P.C.B. LAYOUT

- PAD AREA
- VIA AND TRACE KEEPOUT AREA
- OTHER COMPONENT KEEPOUT AREA



Opening/Close of switch

| | Card Detect Switch |
|-----------------------|--------------------|
| Card Uninsertion | Open |
| Card Half Uninsertion | Open |
| Card Half Insertion | Close |
| N/O | |
| | |
| | |

| | | |
|--|---|--|
| QUALITY CONTROLING DEPARTMENT WILL PRINTED THE SYMBOL AS ★ | METRIC | Han Electronic |
| | DRAWER Y. TOMITA | |
| | APPROVER P. TURNEAU | TITLE T-FLASH CARD CONNECTOR SURFACE MOUNT TYPE |
| | DIMENSIONS ARE IN MILLIMETERS TOLERANCES X. ±0.38 X.X ±0.25 X.XX ±0.20 X.XXX ±0.15 ANGLES ±2° | |
| DO NOT SCALE DRAWINGS | | SCALE NONE |
| SIZE A4 | REV. SHEET 2 OF 2 | |